

# PHOTO PRINT 5

with  
Color **EXTREME**

## PhotoPRINT SE™



### Intuitive & Powerful

- The user interface is long renowned for its ease-of-use.
- Configure as a foreground or background seamless RIP.
- View all the information about the jobs in progress, at a glance.

### Recommended

- Windows 2000 / 2003 / XP Pro
  - Pentium II 350 Mhz
- OR
- Mac OSX 10.2 or higher
  - Mac G3 300 MHz

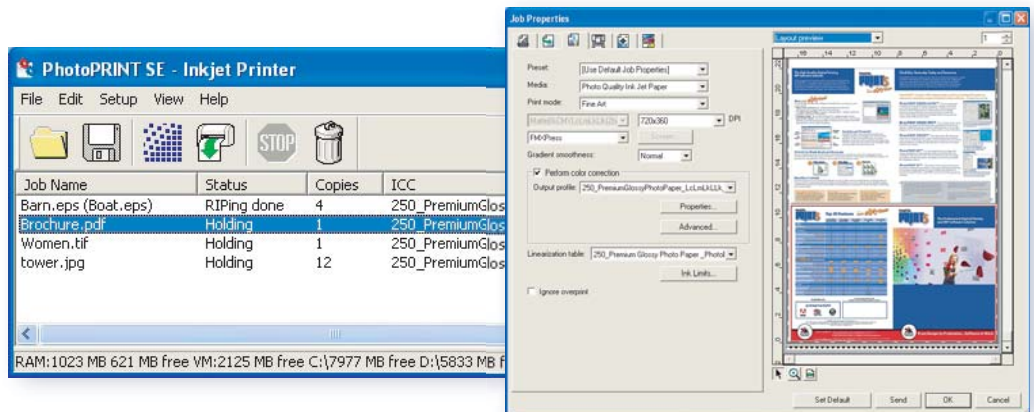
### PLUS

- 1 Gbytes RAM or higher
- 200+ Mbytes Install space
- 4+ Gbytes Working space
- 16-bit 1024x768 video
- 4x CD-ROM
- Available USB port for key
- Internet connection
- Available port connection for each output device

### The Next Step

- Upgrade an older version of PhotoPRINT SE.
- Flexibility to upgrade in the future to PhotoPRINT DX, SERVER or SERVER-ULTRA.

This is the RIP solution with all the fundamentals needed for a single-workstation environment. Send jobs to RIP and print directly from popular design applications such as Adobe Photoshop® and Illustrator®, QuarkXPress®, CorelDRAW®, and CAD/AEC/GIS engineering solutions.



## Is PhotoPRINT SE Right For You?

### Benefits

- Ideal for smaller production environments with a single design station and a single wide-format printer.
- Pantone™ Library and Custom Color Mapping allow you to easily and precisely specify output colors and effortlessly reproduce them again and again.
- Drag and Drop TIFFs, JPEGs and PDFs directly into the queue.
- Output controls make it simple to Scale, Rotate, Copy, and Mirror individual jobs.
- Control your final output with specific ICC profiles for your printer, ink and media.
- Update this software RIP with new drivers and profiles from our website.
- Simple and logical user interface means little training and a short learning curve.
- Separate Rendering Intents for Vector, Bitmap, Text and Gradient for the most accurate composite graphics.
- Freedom of growth to additional powerful productivity tools in other PhotoPRINT FAMILY package levels.

### Features

- Configure a printer setup for out-of-the-box production with over 550 included printer drivers.
- More than 325 "Certified" ICC Output Profiles are included to give you the results you want.
- Color Calibration Wizard for editing existing ICC Output Profiles.
- Create new custom Output Profiles with optional Color Calibration Wizard upgrade.
- This product is available for either PC or Mac systems.

### Adobe® RIP Engine

PhotoPRINT is the only solution on the market that seamlessly integrates the latest genuine Adobe RIP Engine, guaranteeing accuracy, reliability and compatibility.



**From Design to Production...Software at Work.**

# PHOTO PRINT5

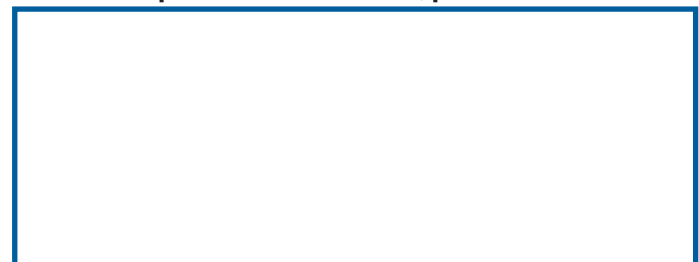
## Top 30 Features

with Color **EXTREME**

	PhotoPRINT SERVER-ULTRA	PhotoPRINT SERVER-PRO	PhotoPRINT SERVER	PhotoPRINT DX	PhotoPRINT SE
<b>Client</b>					
Print Jobs from any Application	✓	✓	✓		✓
Receive Jobs from a Network Environment	✓	✓	✓		
<b>Job Control</b>					
Interactive Tiling / Paneling	✓	✓	✓	✓	
Tile Map Printing	✓	✓	✓		
Print Color Bars	✓	✓	✓	✓	New
Job Nesting: Manual & Automatic	✓	✓	✓		
Manual Editing of Nested Jobs	✓	✓	✓		
Presets: Import, Save, Apply & Export	✓	✓	✓	✓	Improved
<b>RIP</b>					
Adobe® PostScript® 3	Improved	Improved	Improved	Improved	Improved
Contour Cut to Hybrid Printer/Cutter	✓	✓	✓	✓	✓
Contour Cut to Virtual Hybrid Printer/Cutter	✓	✓	✓	✓	
Simultaneous Output Threads	3	3	3	2	1
Custom Media Creation	✓	✓	✓	✓	✓
CMYK & Spot Color Separations	✓	✓	✓	✓	
<b>Color EXTREME Color Management</b>					
Certified Output Profiles powered by GretagMacbeth	Improved	Improved	Improved	Improved	Improved
ICC Profile Editing	✓	✓	✓	✓	✓
ICC Profile Creation	✓	✓			
ICC Profile Creation powered by GretagMacbeth	New		Optional	Optional	Optional
Utilize 3rd Party ICC Output Profiles	Improved	Improved	Improved	Improved	Improved
Object Color Control	New	New	New		
Global Color Mapping with Pantone® Library	✓	✓	✓	Improved	New
Custom Color Mapping	✓	✓	✓		
Printer Simulation	✓	✓	✓		
Vividness Control	New	New	New	New	New
Pure Hue Preservation	✓	✓	✓	✓	New
<b>Design</b>					
Text Creation & Editing	✓	✓		✓	
Make Transparent Bitmap	✓	✓		✓	
Contour Cut Creation & Editing	✓	✓		✓	
Auto Serialization (Variable Data)	✓	✓		Optional	
Templates: Apply, Create, & Edit	✓	✓		Optional	

**POWERED BY:**

**For more information and  
to request a Demonstration, please contact:**



PhotoPRINT is a registered trademark of Scanvec Amiable, Inc.;  
Adobe and PostScript are registered trademarks of Adobe Systems, Inc.; Pantone and other Pantone, Inc. trademarks are the property of Pantone, Inc.;  
GretagMacbeth is the registered trademark of Gretag-Macbeth Ltd. All other trademarks are the property of their respective owners.

©2005 Scanvec Amiable, Inc. All Rights Reserved.



**Scanvec Amiable, Inc.**

International Plaza Two, Suite 625 Philadelphia, PA 19113-1518 USA  
Toll Free: 800-229-9068 Tel: 610-521-6300 Fax: 610-521-0111  
E-mail: [info@ScanvecAmiable.com](mailto:info@ScanvecAmiable.com) Website: [www.ScanvecAmiable.com](http://www.ScanvecAmiable.com)

**Scanvec Amiable Europe**

Minervastraat 14 bis B-1930 Zaventem, Belgium Tel: +32-2-725-5295 Fax: +32-2-725-2809  
E-mail: [info@ScanvecAmiable.be](mailto:info@ScanvecAmiable.be) Website: [www.ScanvecAmiable.com](http://www.ScanvecAmiable.com)