

PHOTO PRINT5

with
Color **EXTREME**

PhotoPRINT SERVER™



Intuitive & Powerful

- The user interface is long renowned for its ease-of-use.
- The most powerful collection of color tools in a straightforward package.
- A common sense approach to the color dilemma.
- View all the information about the jobs in progress, at a glance.

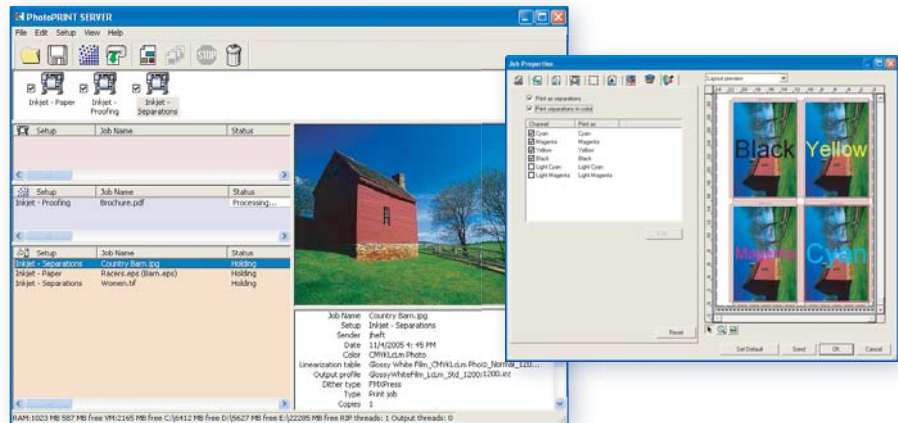
Recommended

- Windows 2000 / 2003 / XP Pro
- Pentium II 350 Mhz
- 1 Gbytes RAM or higher
- 200+ Mbytes Install space
- 4+ Gbytes Working space
- 16-bit 1024x768 video
- 4x CD-ROM
- Available USB port for key
- Internet connection
- Available port connection for each output device

The Next Step

- Upgrade a lower level of PhotoPRINT to SERVER.
- Upgrade an older version of PhotoPRINT or AccuPrint to SERVER.
- Exchange a competitive software RIP to SERVER.

The client-server RIP solution for networks and large production environments, featuring productivity tools such as Job Priority, Page Nesting and Job Nesting. These tools will make workflow to multiple printers generate accurate and consistent results in any volume. Designed for the PC, this level accepts files over a network from both PC and Mac.



Is PhotoPRINT SERVER Right For You?

Benefits

- Integrate PC and Mac design clients without disrupting your team's creative process.
- Drag and Drop TIFFs, JPEGs and PDFs directly into a queue, and even to a different printer setup.
- Pantone™ Library and Spot Color Mapping allow you to easily and precisely specify output colors and effortlessly reproduce them again and again.
- Large images can be tiled with advanced control of each panel and overlap amount.
- Tile Mapping enables quick assembly of tiled prints with fewer mistakes.
- Job labels can be added at the click of a button with clear post-production details.
- Job Priority settings allow for additional workflow control.
- Nest pages and jobs, manually or automatically, for efficient media usage - even manually edit nested jobs.
- Printer Simulation enables you to proof output for one printer on another.

Features

- Configure multiple printers with over 550 built-in printer drivers.
- More than 325 "Certified" ICC Output Profiles are included.
- Color Calibration Wizard for editing existing ICC Output Profiles.
- Create new custom Output Profiles with optional Color Calibration Wizard upgrade.

Adobe® RIP Engine

PhotoPRINT is the only solution on the market that seamlessly integrates the latest genuine Adobe RIP Engine, guaranteeing accuracy, reliability and compatibility.



From Design to Production...Software at Work.

PHOTO PRINT5

Top 30 Features

with Color **EXTREME**

	PhotoPRINT SERVER-ULTRA	PhotoPRINT SERVER-PRO	PhotoPRINT SERVER	PhotoPRINT DX	PhotoPRINT SE
Client					
Print Jobs from any Application	✓	✓	✓		✓
Receive Jobs from a Network Environment	✓	✓	✓		
Job Control					
Interactive Tiling / Paneling	✓	✓	✓	✓	
Tile Map Printing	✓	✓	✓		
Print Color Bars	✓	✓	✓	✓	New
Job Nesting: Manual & Automatic	✓	✓	✓		
Manual Editing of Nested Jobs	✓	✓	✓		
Presets: Import, Save, Apply & Export	✓	✓	✓	✓	Improved
RIP					
Adobe® PostScript® 3	Improved	Improved	Improved	Improved	Improved
Contour Cut to Hybrid Printer/Cutter	✓	✓	✓	✓	✓
Contour Cut to Virtual Hybrid Printer/Cutter	✓	✓	✓	✓	
Simultaneous Output Threads	3	3	3	2	1
Custom Media Creation	✓	✓	✓	✓	✓
CMYK & Spot Color Separations	✓	✓	✓	✓	
Color EXTREME Color Management					
Certified Output Profiles powered by GretagMacbeth	Improved	Improved	Improved	Improved	Improved
ICC Profile Editing	✓	✓	✓	✓	✓
ICC Profile Creation	✓	✓			
ICC Profile Creation powered by GretagMacbeth	New		Optional	Optional	Optional
Utilize 3rd Party ICC Output Profiles	Improved	Improved	Improved	Improved	Improved
Object Color Control	New	New	New		
Global Color Mapping with Pantone® Library	✓	✓	✓	Improved	New
Custom Color Mapping	✓	✓	✓		
Printer Simulation	✓	✓	✓		
Vividness Control	New	New	New	New	New
Pure Hue Preservation	✓	✓	✓	✓	New
Design					
Text Creation & Editing	✓	✓		✓	
Make Transparent Bitmap	✓	✓		✓	
Contour Cut Creation & Editing	✓	✓		✓	
Auto Serialization (Variable Data)	✓	✓		Optional	
Templates: Apply, Create, & Edit	✓	✓		Optional	

POWERED BY:

gretagmacbeth



For more information and
to request a Demonstration, please contact:

PhotoPRINT is a registered trademark of Scanvec Amiable, Inc.;
Adobe and PostScript are registered trademarks of Adobe Systems, Inc.; Pantone and other Pantone, Inc. trademarks are the property of Pantone, Inc.;
GretagMacbeth is the registered trademark of Gretag-Macbeth Ltd. All other trademarks are the property of their respective owners.

©2005 Scanvec Amiable, Inc. All Rights Reserved.



Scanvec Amiable, Inc.

International Plaza Two, Suite 625 Philadelphia, PA 19113-1518 USA
Toll Free: 800-229-9068 Tel: 610-521-6300 Fax: 610-521-0111
E-mail: info@ScanvecAmiable.com Website: www.ScanvecAmiable.com

Scanvec Amiable Europe

Minervastraat 14 bis B-1930 Zaventem, Belgium Tel: +32-2-725-5295 Fax: +32-2-725-2809
E-mail: info@ScanvecAmiable.be Website: www.ScanvecAmiable.com